

# Miles Nelson®

**From the outside in,  
make your house a home.**

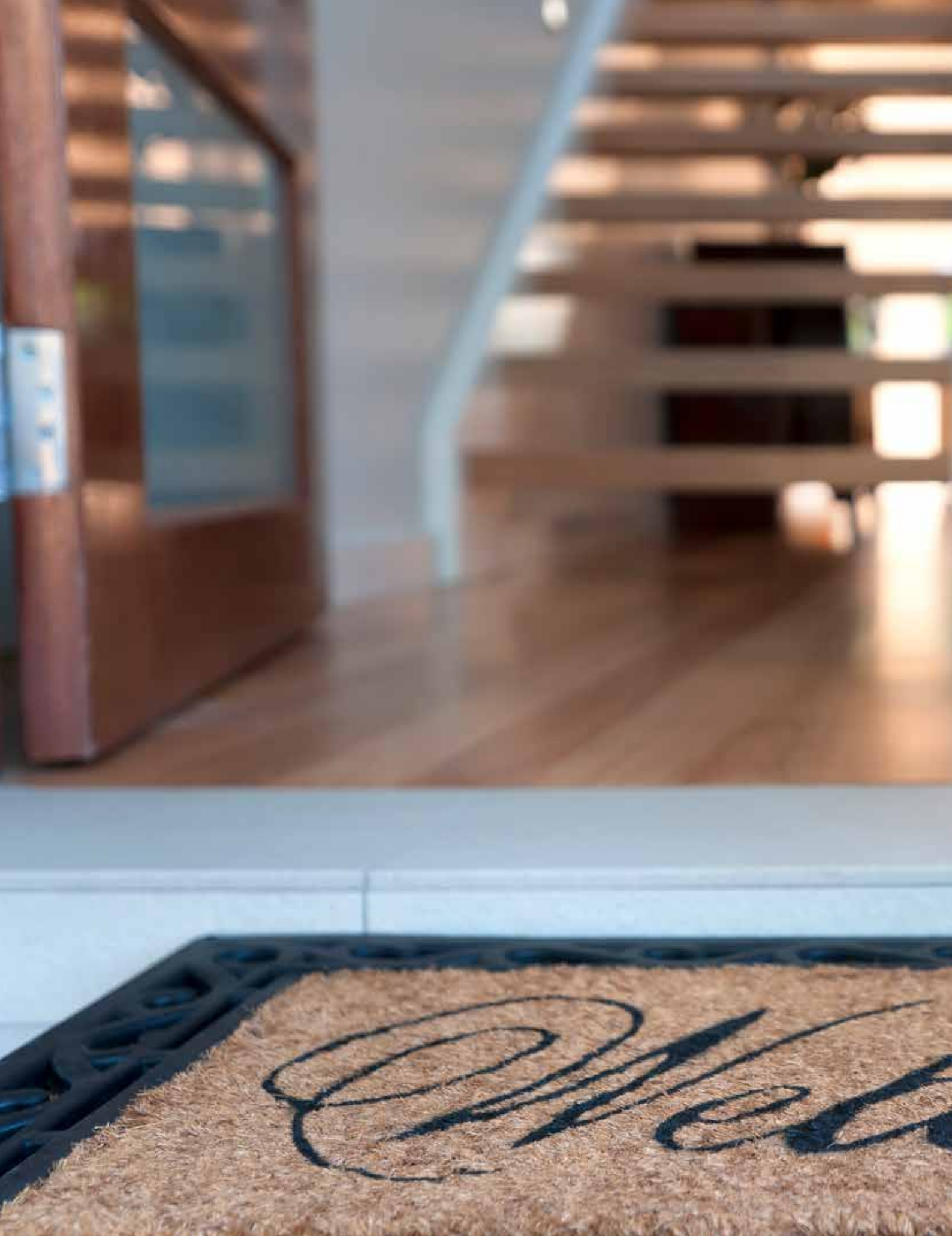
Architectural hardware project range 2019



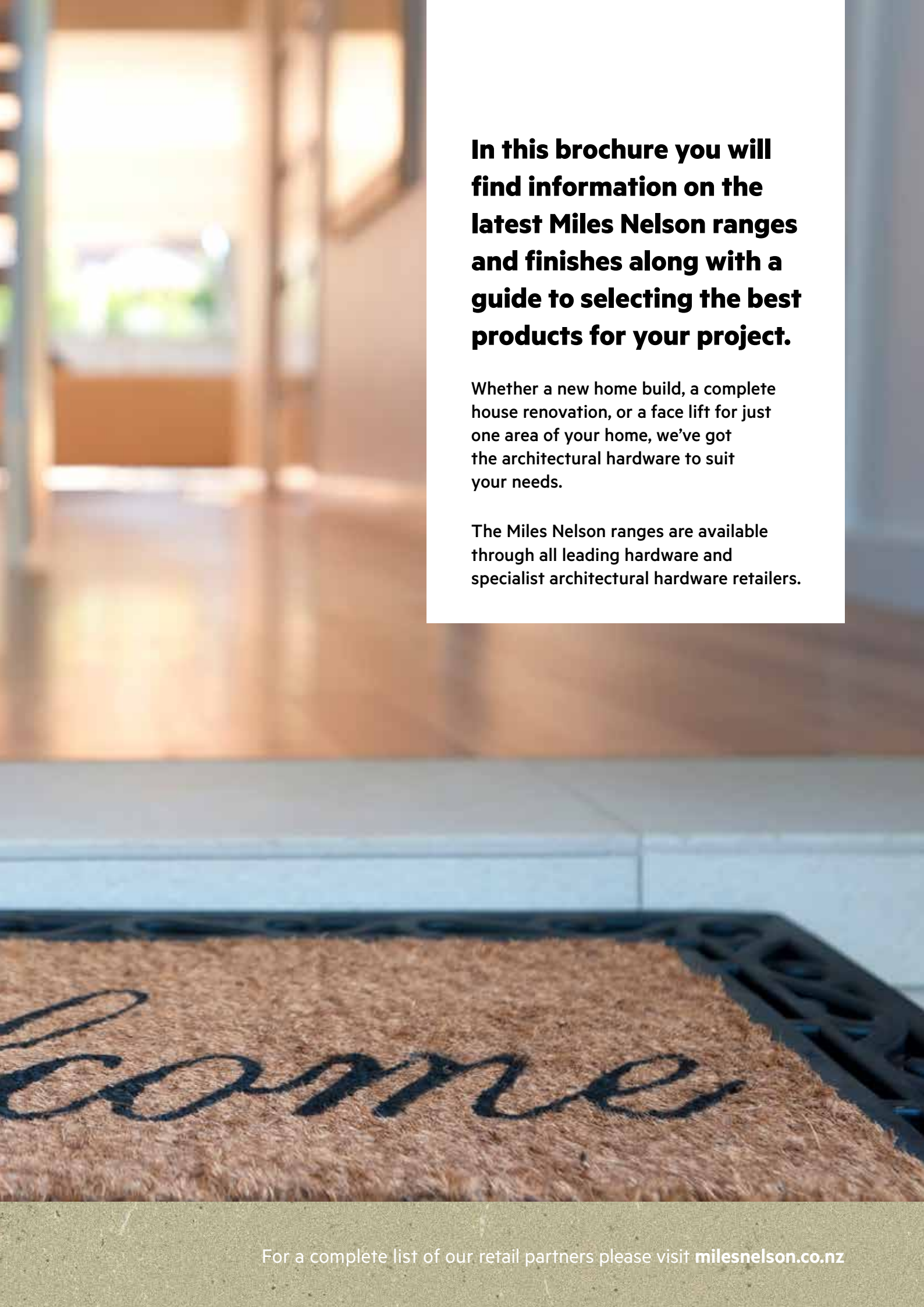
[milesnelson.co.nz](https://milesnelson.co.nz)



**PROUDLY  
NZ OWNED  
& OPERATED**



To locate your nearest stockist phone **0800 6635 766** or email [info@milesnelson.co.nz](mailto:info@milesnelson.co.nz)



**In this brochure you will find information on the latest Miles Nelson ranges and finishes along with a guide to selecting the best products for your project.**

Whether a new home build, a complete house renovation, or a face lift for just one area of your home, we've got the architectural hardware to suit your needs.

The Miles Nelson ranges are available through all leading hardware and specialist architectural hardware retailers.



**Miles  
Nelson®**



**PROUDLY  
NZ OWNED  
& OPERATED**

**Founded in 1928, Miles Nelson is one of New Zealand's most trusted hardware companies and is proud to be 100% privately New Zealand owned and operated.**

Based in Auckland, Miles Nelson distributes nationwide and internationally, and is well known for its quality product range, innovative design and commitment to customer service.

Miles Nelson's long history as a manufacturer, coupled with in house technical expertise and custom designed proprietary products means that our range is specifically designed and manufactured to suit the New Zealand market.

The use of quality materials coupled with a range of high quality finishes and a suite of styles makes the Miles Nelson range the ideal choice for new houses and renovations.

# Contents

Miles Nelson offers a comprehensive range of residential and commercial architectural hardware products:

**06**

Choosing  
a product

**12**

Entrance  
handles

**16**

Door  
handles

**28**

Cavity sliders  
and flush  
pulls

**33**

Door  
stops

**39**

Hinges

**42**

Door fittings  
and flush  
bolts

**48**

Bannister  
brackets

**53**

Window  
fittings

**57**

Safety and  
security

**59**

Bathroom

**67**

Kickplates,  
Numbers and  
letters

# Choosing the right product for your home

Please refer to this house cross section to enable you to quickly find products for different areas of your home within this brochure.

The range featured in this brochure is only a selection of the broad range of quality hardware Miles Nelson offers to suit residential and commercial applications.



## French doors

Rebate kits	14
Door stops and holders	37
Hinges	40
Flush bolts	44
Neck & socket bolts	44
Patio bolts	45

---

To view the full range of products visit:  
**[milesnelson.co.nz](https://milesnelson.co.nz)**

## Fence/ Letterbox

House numbers and letters	69
---------------------------	----

## Stairwell

Bannister brackets	49
Lumos LED stairwell lighting	50

## Window

Window stays	54-55
Fittings	54
Window restrictor	55
Latches	56



## Interior doors

Lever and knob sets	17
Cavity sliders, latches and pulls	29
Flush pulls and lock sets	30
Door stops	34
Coat hooks	37
Hinges	40

## Entrance

Pull handles	13-14
Deadlocks/ bolts	15, 19, 21-23
Coat hooks	37
Door guards/viewers	43

## Bathroom

Robe hooks	60-62
Towel rings	60-62
Towel rails	60-62
Toilet roll holders	60-62
Toilet brushes	60-62
Grab rails	64





# Things to consider

## Types of door functions

### Entrance

Exterior doors – internal locking with turn or button, key access from outside.

### Deadbolt

Single cylinder key and turn or double cylinder key locking from both sides of the door.

### Passage

For general interior or hallway doors (non-locking operation).

### Privacy

For bedroom or bathroom doors (internal locking, emergency access from outside).

### Dummy

For wardrobe and cupboard doors (fixed lever or knob).

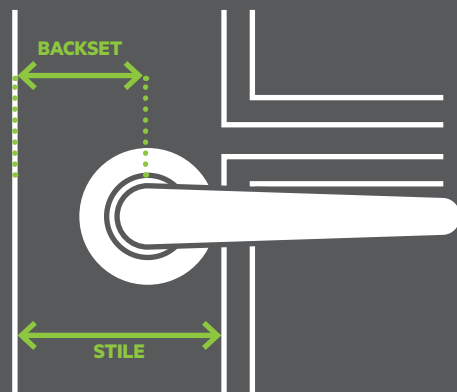
## Replacing hardware

**If you are looking to replace hardware on an existing door, or a door with predrilled holes, you'll need to measure the diameter of the holes and make sure the hardware face plate or trim will cover the openings.**

Measure the backset: the distance from the door edge to the centre of the handle or key barrel and the width of the door stile: which is the vertical panel at the edge of a frame and glass panel door, where the door hardware is installed.

The width of the door stile is important when selecting a lock or handle with the correct backset, particularly if the door is panelled as this reduces the available area to install hardware.

Please refer to the graphic below:



# Things to consider

## Thickness of the door

**Most interior doors range from 33-40mm thick and an exterior door is 40-45mm thick.**

If your door's thickness differs from these standards, you may need to purchase conversion components to ensure the hardware will work with your door.

If you're purchasing a lockset with a lever handle that is left or right handed (i.e. it will only work on either a left or right opening door), you may need to know the direction your door swings (called the door handing or hand-of-door) so you don't end up with levers that are upside down or on the wrong side of the door.

For ease of use Miles Nelson recently launched a range of lever handles and deadbolts called the S range which are non-handed. They also feature a unique interlocking mechanism for easy installation and to avoid the handles drooping after installation.

## Door handing

**Please note that some products are handed to suit right or left hand opening doors.**

Please refer to the diagrams below:



**RIGHT HAND**  
Hinges on left,  
opens inward



**LEFT HAND**  
Hinges on right,  
opens inward



**RIGHT HANDED  
HANDLE**



**LEFT HANDED  
HANDLE**

Stand on the secure side of the door (where you would insert your key, or an unlocking tool if it was a privacy set). For interior doors you should stand on the side that you would enter from i.e. In the hall if opening a hall cupboard door, in the bedroom if the door opens to an ensuite, in the hall if opening into a living room.

For pairs or double doors, determine the hand of the active leaf. The active leaf is typically the door with the lockset. Both leaves may be active.

## Window types and fittings

It is important to note the type of window you are purchasing the fitting for, as there are several types of window which use different stays.

Please refer to the diagram below to check your window type before selecting the appropriate stay or lock in the window fittings section:



**AWNING WINDOW**



**CASEMENT WINDOW**



**SLIDING WINDOW**



**SASH WINDOW**

## Security

If you are choosing the hardware for an exterior door, consider how much security you need or want.

Double cylinder locks are usually the most secure, particularly if you have a glass entry door. Some people like to install a double-cylinder deadbolt; with this setup, an intruder can't unlock the door from the inside even if they break the glass. This also prevents thieves from carrying large items out of a property through the front or back door if they do gain access through a window.

It is important to remember lockable patio bolts on sliding doors for this reason also. However, you'll only want to use a double-cylinder lock if you have another easily accessible fire exit or keep the key in a readily accessible place, to enable occupants to escape the house in an emergency.

# Common finishes glossary

## Miles Nelson

Door hardware and window fittings are available in a variety of styles and finishes so you can choose a style that complements your home, as well as the finishes on other hardware and light fixtures.

When choosing a finish, keep in mind that oil-rubbed bronze, antique bronze and copper are all living finishes that will change over time. Polished brass can tarnish if used outside, to avoid tarnishing it is best to keep it clean and wax it lightly with an appropriate product. Another exterior option to consider is stainless steel.

There are two standard grades of stainless steel: 304 for exterior use in non-coastal areas and 316 for exterior use in properties within 500m of the ocean.

This is especially important to consider in New Zealand with our close proximity to the ocean. Stainless steel can also be cleaned using an appropriate cleaner.

For a clean, contemporary look we also offer the recently launched range of entry and internal door hardware and door stops in a matt black finish.

Please refer to the common finishes glossary below and listed with each product when making your selection.

Chrome Plate	CP	Brushed Nickel	BN
Satin Chrome	SC	Florentine Bronze	FB
Bright Chrome	BC	Powder Coat White	PW
Brass Finish	BR	Matt Black	MB
Polished Solid Brass	PB	Satin Anodised	SA
Bright Goldtone	BG	Uncoated Raw Material	RW
Stainless Steel	SS	Satin Graphite	SG
Polished Stainless Steel	PS	Copper	CU
Satin Nickel	SN		



# Entrance handles

Entrance handles help create the first impression for your home and are a daily touch point that welcomes you and your guests. Whether your entrance blends seamlessly with your chosen design or makes a statement, our comprehensive range provides a selection of entrance options to match. From the latest in digital technology through to classic stylish designs, there is a look to complement or update any home.



# Pull handles

With a combination of durability and style Miles Nelson pull handles will turn your entrance into a statement, with a range of styles to suit residential and commercial applications. Manufactured in 316 grade stainless steel, suitable for external and internal applications and for use with timber, glass and aluminium doors.

## M1 pull handle

- 316 grade stainless steel tube
- Back to back pair
- Fixings supplied
- Suits door thickness: 40mm-52mm

Size: 300mm, centre to centre: 260mm	781SS300	SS
Size: 450mm, centre to centre: 410mm	781SS450	SS
Size: 600mm, centre to centre: 560mm	781SS600	SS
Size: 900mm, centre to centre: 860mm	781SS900	SS
Size: 1200mm, centre to centre: 1160mm	781SS1200	SS



## M1 pull handle

- 316 grade stainless steel tube
- Back to back pair
- Fixings supplied
- Suits door thickness: 40mm-52mm

Size: 600mm, centre to centre: 560mm	781SS600BLK	MB
---	-------------	----



## M1 pull handle

- 316 grade stainless steel tube
- Back to back pair
- Fixings supplied
- Suits door thickness: 40mm-52mm

Size: 600mm, centre to centre: 560mm	781SG600	SG
---	----------	----



## M2 pull handle

- 316 grade stainless steel tube
- Back to back pair
- Fixings supplied
- Suits door thickness: 40mm-52mm

Size: 300mm, centre to centre: 250mm	782SS300	SS
Size: 450mm, centre to centre: 400mm	782SS450	SS
Size: 600mm, centre to centre: 550mm	782SS600	SS
Size: 900mm, centre to centre: 850mm	782SS900	SS



# Pull handles

## M3 offset pull handle

- 316 grade stainless steel tube
- Back to back pair
- Fixings supplied
- Suits door thickness: 40mm-52mm

Size: 600mm, centre to centre: 575mm	783SS600	SS
---	----------	----



## M3 torch pull handle

- 316 grade stainless steel tube
- Back to back pair
- Fixings supplied
- Suits door thickness: 40mm-52mm

Size: 530mm, centre to centre: 250mm	784SS	SS
---	-------	----



## M3 round pull handle

- 316 grade stainless steel tube
- Back to back pair
- Fixings supplied
- Suits door thickness: 40mm-52mm

Size: 450mm, centre to centre: 250mm	785SS450	SS
Size: 600mm, centre to centre: 400mm	785SS600	SS



## M3 square pull handle

- 316 grade stainless steel tube
- Back to back pair
- Fixings supplied
- Suits door thickness: 40mm-52mm

Size: 450mm, centre to centre: 250mm	786SS450	SS
Size: 600mm, centre to centre: 400mm	786SS600	SS



# Pull handles



Pull Handle  
Square

Pull Handle  
Round

## Back to Back Pull Handles

- Heavy walled copper
- Unlacquered finish
- 600 OA / 400CTC / 38mm Diameter

Square	626SBR600	NEW	CU
Round	626RBR600	NEW	CU

## Pull handle lock kit



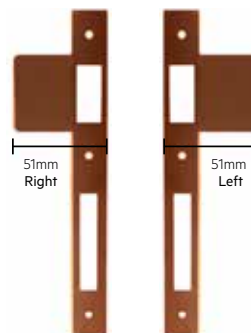
LOCKABLE  
WITH KEY



- 85mm centre to centre mortice lock with copper face plate
- 41mm non handed copper strike
- Solid copper double turns and round escutcheons
- 70mm key and turn C4 euro cylinder

Round	716CURLK60	NEW	CU
-------	------------	-----	----

## Extended Strikes



Left 51mm	626SPLH51	NEW	CU
Right 51mm	626SPRH51	NEW	CU
Left 61mm	626SPLH61	NEW	CU
Right 61mm	626SPRH61	NEW	CU



# Lock and rebate kits

## Pull handle lock kit



LOCKABLE  
WITH KEY



- Provides a secure latch which turns both sides for doors with pulls
- Won't blow open in the wind
- Corrosion resistant stainless faceplate style
- Security deadbolt

Square	716SSSLK60	SN
	716SGSLK60	NEW SG
	716BLKSLK60	MB
Round	716SSRLK60	SN
	716SGRLK60	NEW SG
	716BLKRLK60	MB

## Euro cylinder

KEY CYLINDERS FOR:  
716SSSLK60 & 716SSRLK60



- C4 profile keyway
- Keyed alike option
- 3 keys

Cylinder and turn 65mm	717SN65KD	SN
Cylinder key & turn (keyed alike) 65mm	717SN65KA10	SN
Double cylinder 65mm	718SN65KD	SN
Double cylinder (keyed alike) 65mm	718SN65KA10	SN
Double cylinder 70mm	718SG70KD	NEW SG
Cylinder and turn 70mm	717SG70KD	NEW SG
Cylinder and turn 70mm	717BLK70KD	MB
Cylinder and turn 70mm	717SN70KD	SN

## Rebate kit

TO SUIT: 716SSSLK60 & 716SSRLK60



- Fixings supplied

720SS

SS

Safety notice – for double cylinder function locks we recommend that you do not key lock from the inside when occupants are inside, unless the key is readily accessible and operable by all persons who may need to exit the building in an emergency. Always ensure occupants know how to operate locks and keys to gain immediate exit. Alternatively consider a Trilock single cylinder entrance set which features a push button lock set mode inside the door and a panic release which is activated by simply pushing down on or turning the inside knob or lever. This is also a good option to consider for those with injuries or conditions which make the use of a key difficult.

# Door handles

Door handles are one of the most important pieces of hardware in your house. One of the few pieces we use everyday. Not only should they complement the design of your home, they should be durable, ergonomic and functional. Whether you choose to make a statement with the new matt black range or opt for contemporary satin chrome or one of the more traditional finishes to renovate an existing home, you can rest assured that our range of quality manufactured handles will not only look great but will also stand up well to years of everyday use.



# S range lever handles

Featuring contemporary lever designs combined with advanced engineering and quality manufacturing, the S range is the perfect retrofit or new home option. The range is available in a stylish brushed satin chrome finish designed to compliment any interior.

## S range lever handles

- Manufactured to grade 3 standard
- To fit 54mm hole
- Privacy set – auto release function activated by depressing inside handle, privacy on rose
- 65mm round rose
- Suits door thickness: 32mm-45mm
- Concealed fixing
- Fixings supplied
- Comes with adjustable 60mm/70mm backset tubular latch
- Non-handed
- Dummy – surface mount fixed
- Pressure zinc die cast
- Features a unique through door interlocking system that greatly improves torsional rigidity and ease of installation. Top and bottom grip points significantly reduce the risk of racking or lateral movement which can cause door damage and decreased product life. Positioning lugs inside the covers increase installation accuracy and stop potential twisting of the cover.



**10** YEAR WARRANTY

**MATCHING SQUARE (DEAD1) OR ROUND (DEAD2) DEADBOLT**

### Sara lever

Passage	SAR101	SC
	SAR101BLK	MB
	SAR101SG	NEW SG
Privacy	SAR102	SC
	SAR102BLK	MB
	SAR102SG	NEW SG
Dummy	SAR103	SC
	SAR103BLK	MB
	SAR103SG	NEW SG

### Sienna lever

Passage	SIE101	SC
Privacy	SIE102	SC
Dummy	SIE103	SC

The range comes standard with a round rosette, a matching square rosette is also available as an accessory, along with square and round deadbolts.

### S range lever handles

- Manufactured to grade 3 standard
- To fit 54mm hole
- Privacy set – auto release function activated by depressing inside handle, privacy on rose
- 65mm round rose
- Suits door thickness: 32mm-45mm
- Concealed fixing
- Fixings supplied
- Comes with adjustable 60mm/70mm backset tubular latch
- Non-handed
- Dummy – surface mount fixed
- Pressure zinc die cast
- Features a unique through door interlocking system that greatly improves torsional rigidity and ease of installation. Top and bottom grip points significantly reduce the risk of racking or lateral movement which can cause door damage and decreased product life. Positioning lugs inside the covers increase installation accuracy and stop potential twisting of the cover.



10 YEAR WARRANTY

MATCHING SQUARE (DEAD1) OR ROUND (DEAD2) DEADBOLT

#### Shiloh lever

Passage	SHI101	SC
Privacy	SHI102	SC
Dummy	SHI103	SC

#### Skyler lever

Passage	SKY101	SC
Passage	SKY101BLK	NEW MB
Passage	SKY101SG	AVAILABLE SOON SG
Privacy	SKY102	SC
Privacy	SKY102BLK	NEW MB
Privacy	SKY102SG	AVAILABLE SOON SG
Dummy	SKY103	SC
Dummy	SKY103BLK	NEW MB
Dummy	SKY103SG	AVAILABLE SOON SG



# S range rosette cover and deadbolts

## Square rosette cover for S range

- Features unique locking lugs to ensure it remains square on the door
- Sold as pairs



10 YEAR WARRANTY

TO SUIT S RANGE HANDLES

Passage and Dummy	SCOVER	SC
	SCOVERBLK	MB
	SCOVERSG <b>NEW</b>	SG
Privacy	SPCOVER	SC
	SPCOVERBLK	MB
	SPCOVERSG <b>NEW</b>	SG

Sara handle shown with SCOVER Square rosette (handle sold separately)

## Square and round deadbolt

- C4 keyed lock and turn
  - Manufactured to grade 3 standard
  - Supplied with adjustable bolt, 60 or 70mm backset
  - Suits door thickness: 32mm-45mm
- Particularly suited for internal garage door security due to its low protrusion profile
  - Fixings supplied
  - SC Keyed alike barrels available on request



10 YEAR WARRANTY

TO SUIT S RANGE HANDLES

Square	DEAD1	SC
	DEAD1BLK	MB
	DEAD1SG <b>NEW</b>	SG
Round	DEAD2	SC
	DEAD2BLK	MB
	DEAD2SG <b>NEW</b>	SG

# Milano range lever handles

Italian styled architectural lever door handles.  
Quality, style and functionality. Satin nickel finish.

## Door Handle Sets

- Lever Set** – levers only
- Passage Set** – includes lever set and tubular latch
- Privacy Set** – includes lever set, tubular latch, privacy turn set and tubular privacy bolt
- Dummy Set** – includes dummy lever and taylor spindle
- Entrance Set** – includes lever set, euro escutcheons, 716SS60 euro mortice lock and euro cylinder and turn
- Installation** – 24mm hole plus 2 x 7mm through fixing holes

**10** YEAR  
MECHANICAL  
WARRANTY



### Parma Round Rosette

- Handle length 126mm
- Projection 63mm
- Rose Diameter 55mm
- Satin Nickel finish

Lever Set (furniture only)	PAR100	SN
Passage Set	PAR101	SN
Privacy Set	PAR102	SN
Dummy Set	PAR103	SN
Entrance Set	PAR104	SN
Long Plate E85 Euro Keyhole (furniture only)	PAR106	SN
Long Plate Set	PAR107	SN
Integrated Privacy Set	PAR108	SN



### Parma Square Rosette

- Handle length 126mm
- Projection 63mm
- Rose Diameter 55mm
- Satin Nickel finish

Lever Set (furniture only)	PAR200	SN
Passage Set	PAR201	SN
Privacy Set	PAR202	SN
Dummy Set	PAR203	SN
Entrance Set	PAR204	SN
Long Plate E85 Euro Keyhole (furniture only)	PAR206	SN
Long Plate Set	PAR207	SN
Integrated Privacy Set	PAR208	SN

- Supplied as furniture only lever sets. Latches/accessories sold separately.
- Lever handles designed for comfort.
- Available with round or square back plates.
- Easy installation.
- Locking handle grub screw, ensures a firm handle action.
- Solid mechanical components for superior and long lasting performance.

## Door Handle Sets

- Lever Set** – levers only
- Passage Set** – includes lever set and tubular latch
- Privacy Set** – includes lever set, tubular latch, privacy turn set and tubular privacy bolt
- Dummy Set** – includes dummy lever and taylor spindle
- Entrance Set** – includes lever set, euro escutcheons, 716SS60 euro mortice lock and euro cylinder and turn
- Installation** – 24mm hole plus 2 x 7mm through fixing holes



**10 YEAR MECHANICAL WARRANTY**

### Forli Round Rosette

- Handle length 126mm
- Projection 63mm
- Rose Diameter 55mm
- Satin Nickel finish

Lever Set (furniture only)	FOR100	SN
Passage Set	FOR101	SN
Privacy Set	FOR102	SN
Dummy Set	FOR103	SN
Entrance Set	FOR104	SN
Long Plate E85 Euro Keyhole (furniture only)	FOR106	SN
Long Plate Set	FOR107	SN
Integrated Privacy Set	FOR108	SN



### Forli Square Rosette

- Handle length 126mm
- Projection 63mm
- Rose Diameter 55mm
- Satin Nickel finish

Lever Set (furniture only)	FOR200	SN
Passage Set	FOR201	SN
Privacy Set	FOR202	SN
Dummy Set	FOR203	SN
Entrance Set	FOR204	SN
Long Plate E85 Euro Keyhole (furniture only)	FOR206	SN
Long Plate Set	FOR207	SN
Integrated Privacy Set	FOR208	SN

# Milano range lever handles

Italian styled architectural lever door handles.  
Quality, style and functionality. Satin nickel finish.

## Door Handle Sets

- Lever Set** – levers only
- Passage Set** – includes lever set and tubular latch
- Privacy Set** – includes lever set, tubular latch, privacy turn set and tubular privacy bolt
- Dummy Set** – includes dummy lever and taylor spindle
- Entrance Set** – includes lever set, euro escutcheons, 716SS60 euro mortice lock and euro cylinder and turn
- Installation** – 24mm hole plus 2 x 7mm through fixing holes

**10** YEAR  
MECHANICAL  
WARRANTY



### Verona Round Rosette

- Handle length 125mm
- Projection 52mm
- Rose Diameter 55mm
- Satin Nickel finish

Lever Set (furniture only)	VER100	SN
Passage Set	VER101	SN
Privacy Set	VER102	SN
Dummy Set	VER103	SN
Entrance Set	VER104	SN
Long Plate E85 Euro Keyhole (furniture only)	VER106	SN
Long Plate Set	VER107	SN
Integrated Privacy Set	VER108	SN



### Verona Square Rosette

- Handle length 125mm
- Projection 52mm
- Rose Diameter 55mm
- Satin Nickel finish

Lever Set (furniture only)	VER200	SN
Passage Set	VER201	SN
Privacy Set	VER202	SN
Dummy Set	VER203	SN
Entrance Set	VER204	SN
Long Plate E85 Euro Keyhole (furniture only)	VER206	SN
Long Plate Set	VER207	SN
Integrated Privacy Set	VER208	SN

- Supplied as furniture only lever sets. Latches/accessories sold separately.
- Lever handles designed for comfort.
- Available with round or square back plates.
- Easy installation.
- Locking handle grub screw, ensures a firm handle action.
- Solid mechanical components for superior and long lasting performance.

## Door Handle Sets

- Lever Set** – levers only
- Passage Set** – includes lever set and tubular latch
- Privacy Set** – includes lever set, tubular latch, privacy turn set and tubular privacy bolt
- Dummy Set** – includes dummy lever and taylor spindle
- Entrance Set** – includes lever set, euro escutcheons, 716SS60 euro mortice lock and euro cylinder and turn
- Installation** – 24mm hole plus 2 x 7mm through fixing holes



### Lucca Round Rosette

- Handle length 125mm
- Projection 63mm
- Rose Diameter 55mm
- Satin Nickel finish

Lever Set (furniture only)	LUC100	SN
Passage Set	LUC101	SN
Privacy Set	LUC102	SN
Dummy Set	LUC103	SN
Entrance Set	LUC104	SN
Long Plate E85 Euro Keyhole (furniture only)	LUC106	SN
Long Plate Set	LUC107	SN
Integrated Privacy Set	LUC108	SN



### Lucca Square Rosette

- Handle length 125mm
- Projection 63mm
- Rose Diameter 55mm
- Satin Nickel finish

Lever Set (furniture only)	LUC200	SN
Passage Set	LUC201	SN
Privacy Set	LUC202	SN
Dummy Set	LUC203	SN
Entrance Set	LUC204	SN
Long Plate E85 Euro Keyhole (furniture only)	LUC206	SN
Long Plate Set	LUC207	SN
Integrated Privacy Set	LUC208	SN



# Milano range lever handles

Italian styled architectural lever door handles.  
Quality, style and functionality. Satin nickel finish.

## Door Handle Sets

- Lever Set** – levers only
- Passage Set** – includes lever set and tubular latch
- Privacy Set** – includes lever set, tubular latch, privacy turn set and tubular privacy bolt
- Dummy Set** – includes dummy lever and taylor spindle
- Entrance Set** – includes lever set, euro escutcheons, 716SS60 euro mortice lock and euro cylinder and turn
- Installation** – 24mm hole plus 2 x 7mm through fixing holes

**10** YEAR  
MECHANICAL  
WARRANTY



### Anzio

- Handle length 128mm
- Projection 68mm
- Rose Diameter 55mm
- Satin Nickel finish

Lever Set (furniture only)	ANZ100	SN
Passage Set	ANZ101	SN
Privacy Set	ANZ102	SN
Dummy Set - Right Hand	ANZ103RH	SN
Dummy Set - Left Hand	ANZ103LH	SN
Entrance Set	ANZ104	SN
Long Plate E85 Euro Keyhole (furniture only)	ANZ106	SN
Long Plate Set	ANZ107	SN
Integrated Privacy Set	ANZ108	SN



### Tivoli

- Handle length 124mm
- Projection 61mm
- Rose Diameter 55mm
- Satin Nickel finish

Lever Set (furniture only)	TIV100	SN
Passage Set	TIV101	SN
Privacy Set	TIV102	SN
Dummy Set - Right Hand	TIV103RH	SN
Dummy Set - Left Hand	TIV103LH	SN
Entrance Set	TIV104	SN
Long Plate E85 Euro Keyhole (furniture only)	TIV106	SN
Long Plate Set	TIV107	SN
Integrated Privacy Set	TIV108	SN

# Milano range door hardware

**10** YEAR  
MECHANICAL  
WARRANTY



### Milano Privacy Turn Set

- Satin Nickel finish
- Projection 10mm
- Rose Diameter 55mm

Round Rose	MIL300	SN
Square Rose	MIL305	SN



### Milano Euro Escutcheon

- Satin Nickel finish
- Projection 10mm
- Rose Diameter 55mm

Round Rose	MIL400	SN
Square Rose	MIL405	SN



### Milano Tubular Privacy Bolt

- Satin Nickel finish
- 60mm backset

MIL320	SN
--------	----



### Milano Tubular Latch

- Satin Nickel finish
- 60mm backset
- Recessed box shield included

MIL325	SN
--------	----



### Taylor Spindle

- Made from Steel
- Supplied with 4 x wood screws

Length: 30mm; Base size: 33mm	777CP	CP
----------------------------------	-------	----

# Pro Series range, deadbolts and door knobs

## Pro Series range

- Ergonomic design
- Concealed through door fixing
- Supplied with adjustable tubular latch, 60mm or 70mm backset
- To fit 54mm hole
- Suits door thickness: 32mm-45mm
- Base size: 65mm
- Fixings supplied

10 YEAR WARRANTY



Trento lever set

Entrance	6101SN	SN
Privacy	6102SN	SN
Passage	6103SN	SN
Dummy	6104SN	SN



Turin lever set

Entrance	878SN	SN
Privacy	879SN	SN
Passage	880SN	SN
Dummy	881SN	SN

## Cirque knob set

- 50mm brushed stainless steel alloy
- Comes with 60mm and 70mm cylindrical latch

Entrance	870SS	SS
Privacy	871SS	SS
Passage	872SS	SS
Dummy	873SS	SS



10 YEAR WARRANTY

## Deadbolts

- 5 pin cylinder
- C4 keyway
- Suits door thickness: 32mm-45mm
- Supplied with adjustable bolt, 60 or 70mm backset
- Base size: 65mm
- Fixings supplied



Single cylinder: 301DSN SN



Double cylinder: 302DSN SN  
Keyed both sides

10 YEAR WARRANTY

EASY INSTALLATION

# Internal door deadbolts and knobs



## Round C4 keyed lock and turn unit

- Ideal for garage internal door
- Round base
- Fixings supplied

6205EULBOX

SN

10 YEAR WARRANTY



## Square C4 keyed lock and turn unit

- Ideal for garage internal door
- Square base
- Fixings supplied

6206EULBOX

SN

10 YEAR WARRANTY



## Retrofit knob

- Replacement knob and spindle (non-sprung)
- Heavy duty
- 7.6mm spindle
- Furniture only set, no latch supplied
- 2 x Knobs

850SN

SN

10 YEAR WARRANTY

# Traditional Satin Graphite range



## Traditional lever

- Forged Brass
- Long plate 143mm x 38mm x 8mm spindle
- Short plate 115mm x 38mm x 8mm spindle
- Plain plate/pair

Long Plate 430LPSG **NEW** SG

Short Plate 430SPSG **NEW** SG



## Traditional lever with key hole

- Forged Brass
- Long plate 143mm x 38mm x 8mm spindle
- Standard key hole/pair

430LPKSG **NEW** SG



## Traditional lever with euro key hole

- Forged Brass
- Long plate 143mm x 38mm x 8mm spindle
- 48mm centre to centre
- Euro key hole/pair

430EPSG **NEW** SG



## Traditional lever with privacy turn

- Forged Brass
- Long plate 143mm x 38mm x 8mm spindle
- 48mm centre to centre
- Privacy turn/pair

430PTSG **NEW** SG



## Classic lever

- Forged Brass
- Long plate 143mm x 38mm x 8mm spindle
- Short plate 115mm x 38mm x 8mm spindle
- Plain plate/pair

Long Plate 440LPSG **NEW** SG

Short Plate 440SPSG **NEW** SG



## Classic lever with key hole

- Forged Brass
- Long plate 143mm x 38mm x 8mm spindle
- Standard key hole/pair

440LPKSG **NEW** SG



# Traditional Satin Graphite range



## Classic lever with euro key hole

- Forged Brass
- Long plate 143mm x 38mm x 8mm spindle
- 48mm centre to centre
- Euro key hole/pair

440EPSG

**NEW** **SG**



## Classic lever with privacy turn

- Forged Brass
- Long plate 143mm x 38mm x 8mm spindle
- 48mm centre to centre
- Privacy turn/pair

440PTSG

**NEW** **SG**



## Oval knob

- Forged Brass
- Long plate 143mm x 38mm x 8mm spindle
- Short plate 115mm x 38mm x 8mm spindle
- Plain plate/pair

Long Plate 450LPSG

**NEW** **SG**

Short Plate 450SPSG

**NEW** **SG**



## Oval knob with key hole

- Forged Brass
- Long plate 143mm x 38mm x 8mm spindle
- 48mm centre to centre
- Standard key hole/pair

450LPKSG

**NEW** **SG**



## Oval knob with euro key hole

- Forged Brass
- Long plate 143mm x 38mm x 8mm spindle
- 48mm centre to centre
- Euro key hole/pair

450EPSG

**NEW** **SG**



## Oval knob with privacy turn

- Forged Brass
- Long plate 143mm x 38mm x 8mm spindle
- 48mm centre to centre
- Privacy turn/pair

450PTSG

**NEW** **SG**

# Traditional Satin Graphite range



## Traditional lever round rose

- Forged brass
- 60mm round rose
- 8mm spindle

430SG

**NEW** **SG**



## Classic lever round rose

- Forged brass
- 60mm round rose
- 8mm spindle

440SG

**NEW** **SG**



## Oval knob round rose

- Forged brass
- 60mm round rose
- 8mm spindle

450SG

**NEW** **SG**



## Privacy turn

- 5mm spindle
- For use with 430PTSG, 440PTSG and 450PTSG

451PTSG

**NEW** **SG**

# Traditional Satin Graphite range



## Latch/Bolt

- 60/70mm adjustable latch
- 60mm privacy bolt

Tubular latch 451LSG **NEW** SG

Tubular bolt 452PBSG **NEW** SG



## Privacy turn & Escape

- Projection 10mm
- Rose Diameter 55mm
- Includes privacy bolt

Round Rose 452RPTSG **NEW** SG

Square Rose 452SPTSG **NEW** SG



## Double turn

- Projection 10mm
- Rose Diameter 55mm

Round Rose 452RDPTSG **NEW** SG

Square Rose 452SDPTSG **NEW** SG



## Euro cylinder

- C4 profile keyway
- 70mm
- 6 pin

Cylinder & Turn 717SG70KD **NEW** SG

Double Cylinder 718SG70KD **NEW** SG



## Rebate kit

453RKSG **NEW** SG



## Euro Mortice lock/ Privacy Lock

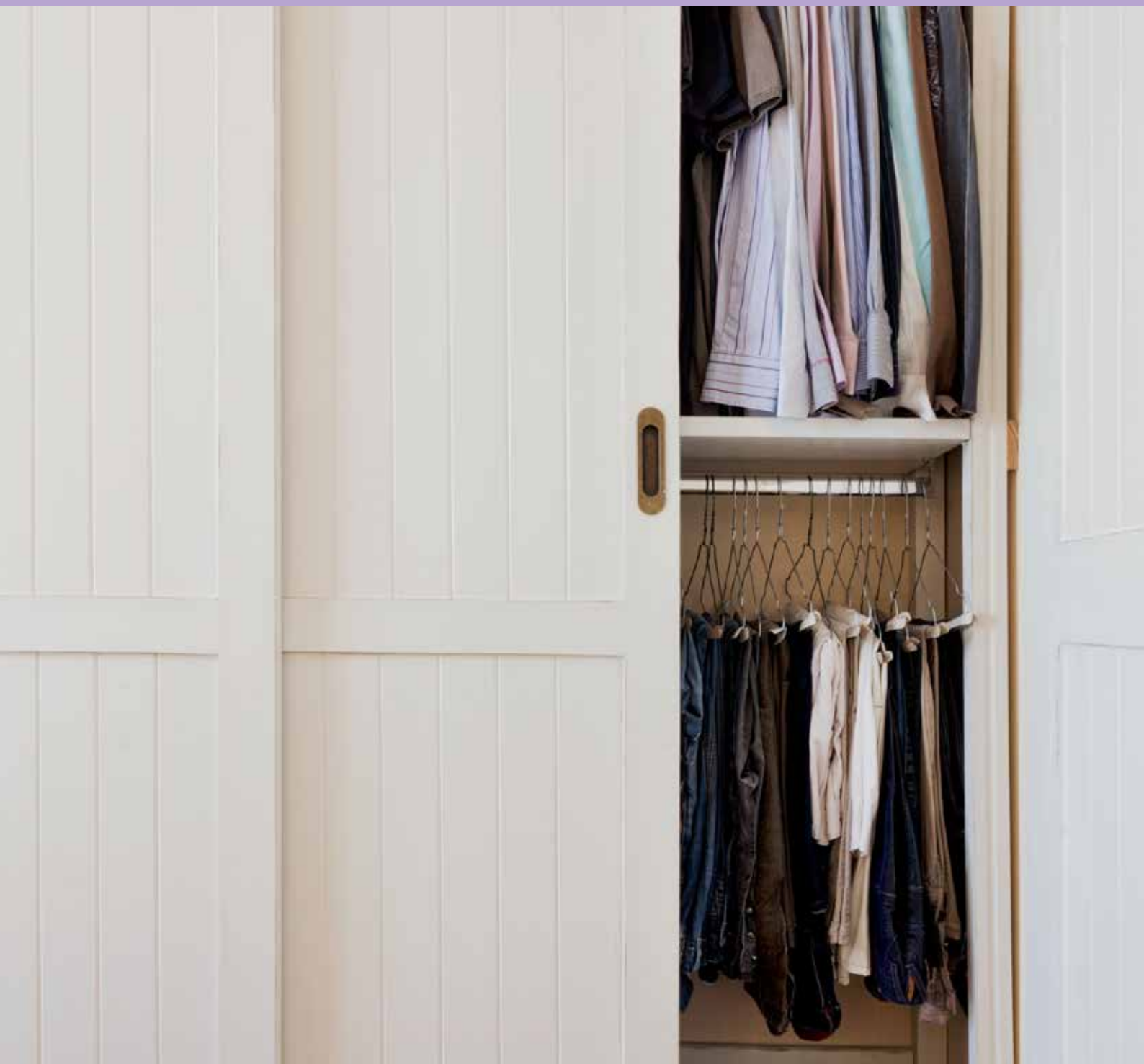
- Mortice lock with double throw bolt
- 48mm centre to centre
- Reversible latch
- 8mm handle spindle/5mm privacy turn spindle
- 45mm backset - 65.5mm (case depth)
- 60mm backset - 80.5mm (case depth)
- 60mm backset privacy - 80.5mm (case depth)

45mm Backset 453ML45SG **NEW** SG

60mm Backset 453ML60SG **NEW** SG

Privacy mortice Lock 453PMLSG **NEW** SG

# Cavity sliders and flush pulls



# Cavity sliders

Sliding doors and movable walls offer a sleek, functional solution to maximise the use of available space. The cavity slider and flush pull range is ideal for use on doors, wardrobes, cupboards or movable walls and is available in a range of functions, styles, finishes and sizes.



## Rectangular sliding cavity door lock

- Lock or unlock with the turn-button from the inside, emergency release from the outside
- Fixings supplied
- Size: 70mm (H) x 64mm (W)
- Suits door thickness: 32mm-36mm

Privacy 746SC **SC**

**5** YEAR WARRANTY



## Rectangular sliding cavity set

- Non-locking for general passage operation
- Fixings supplied
- Size: 70mm (H) x 64mm (W)
- Suits door thickness: 32mm-36mm

Passage 747SC **SC**

**5** YEAR WARRANTY



# Flush pulls

Flush pulls are available in a range of shapes and sizes to suit various applications. The range includes oval, round edge and square kits available in non-locking or locking sets for complete privacy solutions along with concealed fixing options.



## Round locking flush pull kit for sliding doors

- Complete privacy sliding door solution
- Through door fixing, fixings supplied
- 35mm backset
- Suits door thickness: 35mm-38mm
- Door pull: 160mm (H) x 41mm (W)
- Finger pull: 30mm

228SS

SS

5 YEAR WARRANTY

TURN KNOB PROTRUDES 5MM BOTH SIDES - USE CODE 746SC FOR FULLY RECESSING DOORS



## Square locking flush pull kit for sliding doors

- Complete privacy sliding door solution
- Through door fixing, fixings supplied
- 35mm backset
- Suits door thickness: 35mm-38mm
- Door pull: 160mm (H) x 45mm (W)
- Finger pull: 26mm (H) x 26mm (W)

227SN

SN

5 YEAR WARRANTY

TURN KNOB PROTRUDES 7MM BOTH SIDES - USE CODE 746SC FOR FULLY RECESSING DOORS



## Square edge flush pull kit

- Complete cavity slider handle solution
- Concealed fixing, fixings supplied
- Includes square end finger pull (Zinc)
- Finger pull flange: 25mm (Outer) x 18mm (Inner)
- Door pull: 102mm (H) x 52mm (W) x 10mm (D)
- Kit includes 2 x door pulls and 1 x finger pull

222SS

SS

222PB

MB

5 YEAR WARRANTY



## Oval round edge flush pull kit

- Complete cavity slider handle solution
- Concealed fixing, fixings supplied
- Includes end finger pull (zinc)
- Finger pull flange: 30mm (Outer) x 26mm (Inner) x 10mm (D)
- Flush pull: 120mm (H) x 40mm (W) x 11mm (D)
- Kit includes 2 x door pulls and 1 x finger pull

224SS

SS

224PB

MB

5 YEAR WARRANTY



## Square flush finger pull

- For cavity door edges and cupboard doors
- To be glued into the same size diameter hole
- Flange: 25mm (Outer) x 16mm (Inner) x 18mm (D)

748SS26

SS

748PB26

MB

5 YEAR WARRANTY



## Round flush finger pull

- For cavity door edges and cupboard doors
- To be glued into the same size diameter hole
- Concealed fixing

Size: 30mm, depth: 10mm, inner circle: 26mm

744SC30

SS

744PB30

MB

Size: 40mm, depth: 10mm, inner circle: 35mm

744SC40

SS

Size: 50mm, depth: 10mm, inner circle: 40mm

744SC50

SS

5 YEAR WARRANTY

# Flush pulls



## Round flush finger pull

- To be glued into the same size diameter hole
- Concealed fixing

Flange: 90mm,  
diameter: 72mm,  
depth: 19mm

745SS90

SS

5 YEAR WARRANTY



## Rectangular flush pull

- Three sizes available
- Concealed fixing
- Fixings supplied
- Brushed stainless steel

Size: 120mm (H)  
x 40mm (W) x  
12mm (D)

981120SS

SS

Size: 240mm (H)  
x 40mm (W) x  
12mm (D)

9811240SS

SS

5 YEAR WARRANTY



## Flush pull

- Fixings supplied

Size: 100mm (H)  
x 37mm (W) x  
10mm (D)

106SC100

SC

106CP100

CP

106FB100

FB

106GD100

BG

106PW100

PW

5 YEAR WARRANTY



## Flush pull

- Fixings supplied

Size: 140mm (H)  
x 33mm (W) x  
10mm (D)

106SC140

SC

106CP140

CP

106FB140

FB

106GD140

BG

106PW140

PW

5 YEAR WARRANTY



## Square edge flush pull

- Size: 102mm (H) x  
52mm (W) x 10mm (D)

Non concealed 713SS

SS

Concealed fix 733SS

SS

733PB

MB

5 YEAR WARRANTY



## Oval edge flush pull

- Size: 120mm (H) x  
40mm (W) x 10mm (D)

Non concealed 712SS

SS

Concealed fix 732SS

SS

732PB

MB

5 YEAR WARRANTY

# Flush pulls



### Flush Pull

- Made from Aluminium
- Supplied with 2 x machine screws and 2 x wood screws

Size: 42x126x16mm, Centre to centre: 96mm	772SN	NEW	SN
	772SG	NEW	SG
Size: 42x158x16mm, Centre to centre: 128mm	773SN	NEW	SN
	773SG	NEW	SG
Size: 42x190x16mm, Centre to centre: 160mm	774SN	NEW	SN
	774SG	NEW	SG
Size: 42x254x16mm, Centre to centre: 224mm	775SN	NEW	SN
	775SG	NEW	SG



### Finger Pull with stainless steel hook

- Stainless Steel finish
- Made from Stainless Steel, SS304
- Supplied with 2 x wood screws

100x20x22mm	776SS	NEW	SS
-------------	-------	-----	----

# Door stops

Our comprehensive range of door stops includes latching, magnetic or door holding options which are available in wall, floor or centre door mounting versions. There are also heavy duty latching door stops that are suitable for securing external doors. When selecting a door stop, consider the location, size and weight of the door. The area of the house it will be used in, and whether the door needs to be fastened back for safety or convenience. The finish of the door stop should ideally match the door hardware.

Additional considerations are the depth of the door handle, the thickness of the skirting board and the height of the carpet when choosing the correct length of door stop for your project.



# Wall mounts

All products on this page feature a 5 year warranty

5 YEAR WARRANTY



## Square base and tip wall mount

- Fixings supplied
- Aluminium
- Matt finish

Length: 110mm, base size: 32mm	402SC110A	SC
Length: 85mm, base size: 32mm	402SC85A	SC
	402PB85A	MB



## Stainless steel rectangular wall mount

- Concealed fixing
- Fixings supplied

Length: 70mm, base size: 25mm	601SS	SS
Length: 100mm, base size: 25mm	601SS100	SS



## Square base and tapered tip wall mount

- Screw fixing built in to base
- Brushed stainless steel

Length: 80mm, base size: 16mm	402SS	SS
----------------------------------	-------	----



## Square base round tip wall mount

- Fixings supplied
- Brushed satin chrome finish

Length: 85mm, base size: 40mm	231SC	SC
Length: 100mm, base size: 40mm	231SC100	SC



## Square with round tip wall mount

- Concealed single point fixing
- Brushed satin chrome finish

Length: 80mm, base size: 20mm	232SC	SC
Length: 95mm, base size: 20mm	232SC100	SC



## Classic round tapered wall mount

- Comes with black and white tips
- Concealed fixing
- Fixings supplied

Length: 80mm, base size: 30mm	400SC (on brass)	SC
	400SS (stainless steel)	SS



## Classic round tapered wall mount

- Fixings supplied

Length: 77mm, base size: 28mm	403SC (on zinc)	SC
	403BR	PB
	403SN (on zinc)	SN
	403SG	NEW SG



## Round base with straight edge round tip wall mount

- Aluminium
- Concealed fixing
- Fixings supplied

Length: 85mm, base size: 33mm	404SN	SN
Length: 85mm, base size: 32mm	202DS85A	SA
	202DS85APB	MB
	202SG85A	NEW SG
Length: 105mm, base size: 32mm	202DS105A	SA



# Wall and floor mounts

All products on this page feature a 5 year warranty

5 YEAR WARRANTY



## Contemporary solid square floor mount

- Zinc
- Concealed fixing
- Fixings supplied

Height: 39mm;  
base size: 39mm

809SN

SN



## Contemporary solid round floor mount

- Zinc
- Concealed fixing
- Fixings supplied

Height: 39mm;  
base size: 39mm

801SN

SN



**B**  
**D**  
BRASS  
LIFETIME  
GUARANTEE

## Round base rounded tip wall mount

- Forged brass
- Pinned rubber tip
- Fixings supplied

Length: 90mm;  
base size: 43mm

204SC

SC

204SG

NEW

SG



## Round base rounded tip wall mount

- Aluminium
- Fixings supplied

Length: 85mm,  
base size: 38mm

203SC

SC

203PB

MB



## Square with square tip wall mount

- Aluminium
- Fixings supplied
- White and black tips

Height: 75mm

806SC

SC

806SN

SN

806SG

NEW

SG



## Round with straight edge round tip wall mount

- Aluminium
- Fixings supplied
- White and black tips

Height: 75mm

804SC

SC

804SN

SN



## Contemporary triangular base floor mount

- Zinc diecast
- Fixings supplied

Height: 43mm,  
overall height:  
30mm from base  
to rubber, base size:  
62mm x 52mm

98725SC

SC



## Contemporary rectangular base floor mount

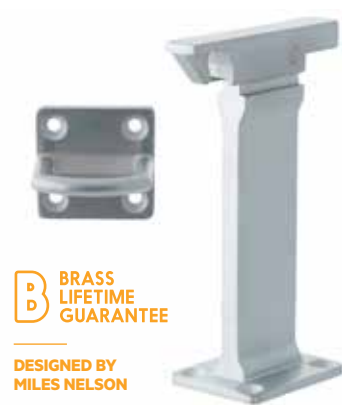
- Zinc
- Concealed fixing
- Fixings supplied

Length: 25mm;  
base size: 46mm

206SC

SC

# Exterior use self latching door stops



**BD** BRASS  
LIFETIME  
GUARANTEE

DESIGNED BY  
MILES NELSON

### Mantis latching door stop floor mount

- Suitable for indoor and outdoor use
- Forged brass
- Height: 125mm to hook
- Self latching with foot release

609SC

SC

609SG

**NEW** SG



**BD** BRASS  
LIFETIME  
GUARANTEE

DESIGNED BY  
MILES NELSON

### Heavy duty latch back floor mount door stop

- Heavy duty suitable for commercial and exterior use
- Forged brass
- Fixings supplied
- Base size: 45mm x 68mm
- Self latching with foot release

608SC

SC

608SC150

SC

608PB

MB



**BD** BRASS  
LIFETIME  
GUARANTEE

DESIGNED BY  
MILES NELSON

### Mantis latching door stop wall mount

- Suitable for indoor and outdoor use
- Forged brass
- Fixings supplied
- Base size: 70mm x 46mm
- Self latching with foot release
- Attached length base to base: 80mm

609SCWM

SC

609SGWM

**NEW** SG



**BD** BRASS  
LIFETIME  
GUARANTEE

DESIGNED BY  
MILES NELSON

### Heavy duty latch back wall mount door stop 60mm

- Heavy duty suitable for commercial and exterior use
- Forged brass
- Fixings supplied
- Base size: 70mm x 46mm
- Self latching

608SCW

SC



**5** YEAR  
WARRANTY

### Foot operated release door stop wall mount

- Suitable for indoor and outdoor use
- Suitable for left or right opening doors
- Fixings supplied
- Height: 80mm
- Base size: 50mm x 28mm
- Catch: 38mm x 20mm x 15mm (H)
- Powder coated finish
- Designed by Miles Nelson

700SC

SC

# Door stops, hooks and magnetic door stops

All products on this page feature a 5 year warranty

5 YEAR WARRANTY



### Door stop and hook

- Concealed fixing
- Fixings supplied
- Centre door fix

Length: 95mm;  
base size: 50mm

604SS

SS



### Square base latching door stop wall mount

- Square base with 4 screw fixings
- Swivelling latch
- Fixings supplied

Length: 75mm;  
base size: 45mm

218SC

SC

218SN

SN



### Round base latching door stop wall mount

- Fixings supplied
- Swivelling latch

Length: 80mm;  
base size: 45mm

600SC

SC

600PW

PW

600PB

MB

600RM

RW



### Door stop and hook

- Fixings supplied

Length: 90mm;  
base size: 40mm

702SC

SC



### Spring cushioned magnetic door stop floor or wall mount

- Concealed fixing
- Fixings supplied
- Magnet catch:  
48mm diameter x 10mm

Length: 75mm;  
base size: 50mm

705SC

SC



### Spring cushioned magnetic door stop floor or wall mount

- Concealed fixing
- Fixings supplied
- Magnet catch:  
30mm diameter x 15mm high

Length: 80mm;  
base size: 42mm

714SN

SN

# Door stops

All products on this page  
feature a 5 year warranty

5 YEAR  
WARRANTY



### Overhead Door Stop with White Rubber

- Stainless Steel finish
- Made from Stainless Steel, SS304
- Supplied with 4 x wood screws
- Left or Right hand options available

Height: 160mm	763SSL	NEW	SS
	763SSR	NEW	SS



### One Piece Auto Door Holder

- Stainless Steel
- Suitable for doors with door closers: foot operated
- Uses the weight of the door to hold open

807SN	NEW	SS
-------	-----	----



### Round with surround buffer floor mount

- Aluminium
- Suits concrete and timber floors
- Supplied with m8 Hanger bolt for timber fixing and 8mm dynabolt

Height: 38mm; Base size: 37mm	207SC	SC
	207PB	MB
Height: 60mm; Base size: 37mm	207BS60	SC
Height: 40mm; Base size: 38mm	207SN40	NEW SN
	207SG40	NEW SG
Height: 60mm; Base size: 38mm	207SN60	NEW SN
	207SG60	NEW SG
Height: 90mm; Base size: 38mm	207SN90	NEW SN



### Hold Back Door Stop Straight

- Easy installation
- Includes white or black clips
- Affordable latch back option
- Stops doors slamming

238SN	NEW	SN
-------	-----	----



### Hold Back Door Stop Tapered

- Easy installation
- Includes white or black clips
- Affordable latch back option
- Stops doors slamming

239SN	NEW	SN
-------	-----	----



### Round with surround buffer floor mount

- Aluminium
- Suits concrete and timber floors
- Supplied with 6mm dynabolt and stainless steel screw

Height: 38mm; Base size: 37mm	207SC2	2 pieces	SC
----------------------------------	--------	----------	----

# Hinges

The Miles Nelson hinge range includes a variety of finishes, sizes and profiles to suit any project from DIY through to commercial applications.

A range of materials and finishes are available for use in internal and external applications, including 316 marine grade stainless steel for coastal areas, satin nickel, satin chrome and contemporary matt black.



# Hinges – square edge

All products on this page feature a 5 year warranty



- Fixed pin
- Ball bearing hinge
- Size: 75mm (H) x 50mm (W) x 2mm (D)
- Satin finish
- 304 and 316 grade stainless steel
- Suitable for interior and exterior use

304 grade stainless steel	520SSH7550304S	SS
316 grade stainless steel	520SSH7550316S	SS



- Fixed pin
- Ball bearing hinge
- Size: 100mm (H) x 100mm (W) x 2.5mm (D)
- Satin finish
- 304 grade stainless steel
- Suitable for interior and exterior use

520SSH100100	SS
--------------	----



- Fixed pin
- Ball bearing hinge
- Size: 100mm (H) x 75mm (W) x 2.5mm (D)
- Satin finish
- 304 grade stainless steel and brass
- Suitable for interior and exterior use
- Also available as a brass base with Satin Graphite finish

520SSH10075304S	SS
520SGH10075	NEW SG



- Fast fix flush
- Fixed pin
- Sinter bearing hinge
- Size: 100mm (H) x 70mm (W) x 2.5mm (D)
- Satin finish
- 304 grade stainless steel
- Suitable for interior and exterior use

981071FFBSS	SS
-------------	----



- Square edge
- Size: 90mm (H) x 60mm (W) x 2.5mm (D)

520SS9060 (fixed pin 304 stainless steel)	SS
520SGH9060 (loose pin steel)	NEW SG

# Hinges – radius edge

All products on this page feature a 5 year warranty



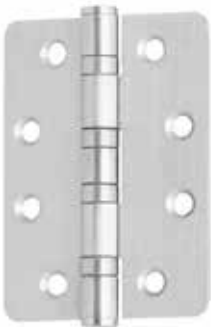
- Loose pin
- Steel
- Size: 90mm (H) x 60mm (W) x 2mm (D)

520SCH9060		SC
520PBH9060	(Comes with screws)	MB
520SNH9060		NEW SN
520SGH9060R	(Comes with screws)	NEW SG



- Fixed pin
- Satin finish
- 304 grade stainless steel
- Suitable for interior and exterior use

Size: 90mm (H) x 60mm (W) x 2.5mm (D)	520SSH9060R	SS
---------------------------------------	-------------	----



- Fixed pin
- Ball bearing hinge
- Satin finish
- 304 grade stainless steel
- Suitable for interior and exterior use
- Also available as a brass base with Satin Graphite finish

Size: 100mm (H) x 75mm (W) x 2.5mm (D)	520SSH10075R	SS
	520SGH10075R	NEW SG



# Door fittings and flush bolts

Providing you peace of mind with a range of high quality, solid brass flush bolts and door fittings. You will find additional security products for aluminium and timber windows and doors in the safety and security section.



# Door fittings and Dust sockets

All products on this page feature a 5 year warranty

**5** YEAR WARRANTY



## Safety chain – steel

- Designed to be strong, secure and easy to use
- DIY friendly installation
- Fixings supplied

217CP

CP



## Door guard

- Simple flip open and close operation
- Fixings supplied

707SC

SC

707BR

BR



## Door viewer

- 200 degree viewing angle
- Suits door thickness: 35mm-45mm

709SC

SC

709BR

BR



## Door magnet

- Size: 22mm x 6mm
- Countersunk fixings supplied

1 pair 332CP

CP

6 pairs 332/6CP

CP

1 pair magnet with cups 332MWC

CP



## Dust socket

- For use with flush bolts, socket bolts, neck bolts and patio bolts (up to 12mm thick bolt)
- Concrete and timber fix
- Solid brass
- Length: 47mm
- Flange diameter: 43mm
- Socket diameter: 21mm

For timber

214SC

SC

214SN

SN

For concrete

314SC

SC

314PB

MB

SUITS: 711, 215, 216 AND 305 SERIES FLUSH BOLTS



## Dust socket

- Length: 40mm
- Diameter: 19mm
- Fits 12mm diameter bolts

706SC

SC

706BR

PB

SUITS: 711, 215, 216 AND 305 SERIES FLUSH BOLTS

# Flush bolts



## Flush door bolts

- Flush socket bolt
- Solid brass, one piece extrusion
- Suitable for bi fold, sliding and hinged doors
- Positive locating
- Fixings supplied

<b>Length: 100mm, bolt: 8mm, throw: 36mm</b>	215SC08100	SC
	215BR08100	PB
	215SN08100	SN
<b>Length: 150mm, bolt: 10mm, throw: 25mm</b>	215SC10150	SC
	215BR10150	PB
	215SN10150	SN

**B D** BRASS  
LIFETIME  
GUARANTEE

DESIGNED BY  
MILES NELSON



## Flush necked bolt

- Solid brass, one piece extrusion
- Forged neck bolt for superior strength
- Fixings supplied
- Suitable for bi fold, sliding and hinged doors

<b>Length: 100mm, bolt: 8mm, throw: 20mm</b>	216SC08100	SC
	216BR08100	PB
	216SN08100	SN
<b>Length: 150mm, bolt: 10mm, throw: 25mm</b>	216SC10150	SC
	216BR10150	PB
	216SN10150	SN

**B D** BRASS  
LIFETIME  
GUARANTEE

DESIGNED BY  
MILES NELSON



## Flush necked bolt

- Solid brass
- Available in standard non-locking or key locking function
- Non-locking length: 150mm, bolt: 9mm, throw: 30mm
- Locking length: 150mm, bolt: 9mm, throw: 30mm
- Keyed alike available on request

<b>Non-locking</b>	405SC150	SC
	405SG150	NEW SG
<b>Locking</b>	405SCL150	SC
	405SGL150	NEW SG

**B D** BRASS  
LIFETIME  
GUARANTEE

DESIGNED BY  
MILES NELSON



## Straight flush bolt

- Solid brass
- Non-locking length: 150mm, bolt: 9mm, throw: 30mm
- Locking length: 150mm, bolt: 9mm, throw: 30mm

<b>Non-locking</b>	505SC150	SC
	505SG150	NEW SG
<b>Locking</b>	505SCL150	SC
	505SGL150	NEW SG

**B D** BRASS  
LIFETIME  
GUARANTEE

DESIGNED BY  
MILES NELSON

# Flush lever bolts



## Flush lever bolt

- Lever action
- Zinc Alloy
- Fixings supplied
- Length: 150mm, bolt: 12mm, throw: 18mm
- Width: 19mm

711SC	SC
711BR	PB



## Flush lever bolt

- Lever action
- Forged solid brass
- Heavy duty
- Size: 150mm x 25mm, throw: 18mm, rod: 12mm
- Fixings supplied
- Brushed satin chrome finish

305SC150	SC
305SG150	NEW SG
305SN150	NEW SN

**B** BRASS  
LIFETIME  
GUARANTEE



## Flat bar flush lever bolt

- Lever action
- Forged solid brass
- Heavy duty
- Bolt is a flat bar
- Size: 150mm x 25mm, throw: 18mm
- Fixings supplied
- Brushed satin chrome finish

305SC150F	SC
-----------	----

**B** BRASS  
LIFETIME  
GUARANTEE

# Door fasteners

All products on this page  
feature a 5 year warranty

5 YEAR  
WARRANTY



## French double door fastener

- Solid brass
- Fixings supplied

475BR	BR
457FB	FB
475CP	CP
475SC	SC
475SG	NEW SG

BD BRASS  
LIFETIME  
GUARANTEE

# Socket bolts, Necked bolts and Cabin hooks



## Socket bolts

- Made from seamless brass with an 8mm rod
- Fixings supplied



35mm	262BR0835BP	BR
	262CP0835BP	CP
	262FB0835BP	FB
	262SC0835BP	SC
50mm	262BR0850BP	BR
	262CP0850BP	CP
	262FB0850BP	FB
	262SC0850BP	SC
60mm	262BR0860BP	BR
	262CP0860BP	CP
	262FB0860BP	FB
	262SC0860BP	SC
75mm	262BR0875BP	BR
	262CP0875BP	CP
	262FB0875BP	FB
	262SC0875BP	SC
100mm	262BR08100BP	BR
	262CP08100BP	CP
	262FB08100BP	FB
	262SC08100BP	SC
150mm	262BR10150	BR
	262CP10150	CP
	262FB10150	FB
	262SC10150	SC
200mm	262BR10200	BR
	262CP10200	CP
	262FB10200	FB
	262SC10200	SC



## Necked bolts

- Made from seamless brass with an 8mm rod
- Fixings supplied



60mm	269BR0860BP	BR
	269CP0860BP	CP
	269FB0860BP	FB
	269SC0860BP	SC
75mm	269BR0875BP	BR
	269CP0875BP	CP
	269FB0875BP	FB
	269SC0875BP	SC
100mm	269BR08100BP	BR
	269CP08100BP	CP
	269FB08100BP	FB
	269SC08100BP	SC
150mm	269BR10150	BR
	269CP10150	CP
	269FB10150	FB
	269SC10150	SC



## Cabin hooks - Commercial

- Made from stainless steel

100mm	276SS100BP	SS
150mm	276SS150BP	SS
	376SS150	SS
200mm	376SS200	SS



## Cabin hooks

- Made from forged brass with an 8mm rod
- Fixings supplied



50mm	276BR0850BP	BR
	276CP0850BP	CP
	276FB0850BP	FB
	276SC0850BP	SC
75mm	276BR0875BP	BR
	276CP0875BP	CP
	276FB0875BP	FB
	276SC0875BP	SC
100mm	276SG0875BP	NEW SG
	276BR08100BP	BR
	276CP08100BP	CP
	276FB08100BP	FB
150mm	276SC08100BP	SC
	276SN08100	SN
	276SG08100BP	NEW SG
	276BR10150	BR
200mm	276CP10150	CP
	276FB10150	FB
	276SC10150	SC
	276BR10200	BR
	276CP10200	CP
	276FB10200	FB
	276SC10200	SC



# Bannister brackets

One of New Zealand's leading suppliers of bannister and handrail brackets, Miles Nelson offers a wide range in zinc, brass and stainless steel for domestic and commercial installations. The range also features the Lumos® LED Handrail Brackets, designed for interior or exterior home or commercial ambient, night or safety lighting in stairways, walkways and entrance ways. The revolutionary Lumos® LED bannister bracket seamlessly blends function and design by providing lighting within the bracket body.





# Bannister brackets

All products on this page  
feature a 5 year warranty

5 YEAR  
WARRANTY

DESIGNED BY  
MILES NELSON



- Square base
- Concealed fixing
- Suits square and round rails
- Includes flat rail adapter
- Fixings supplied
- Base: 58mm x 58mm
- Wall projection: 75mm
- Upstand height: 75mm
- Complies with BIA acceptable solution D1/S1

312SC	SC
312BR	BR
312FB	FB
312SN	SN



- Square base
- Concealed fixing
- Suits square and round rails
- Includes flat rail adapter
- Fixings supplied
- Base: 55mm x 45mm
- Wall projection: 75mm
- Upstand height: 65mm

410SC SC



- Round base
- Concealed fixing
- Suits square and round rails
- Includes flat rail adapter
- Fixings supplied
- Base diameter: 58mm
- Wall projection: 75mm
- Upstand height: 75mm
- Complies with BIA acceptable solution D1/S1

310SC	SC
310CP	CP
310BR	BR
310SN	SN
310PB	MB
310PW	PW
310RM (uncoated for custom finish)	RW
310FB	FB
310SG	NEW SG



- Round base
- Concealed fixing
- Suits square and round rails
- Includes flat rail adapter
- Fixings supplied
- Includes flat rail adapter
- Base diameter: 58mm
- Upstand height: 80mm

311SC SC



- Square base
- Concealed fixing
- Suits square and round rails
- Fixings supplied
- Base: 58mm x 58mm
- Upstand height: 80mm

313SC SC

# Lumos® bannister brackets

**The revolutionary Lumos® LED bannister bracket seamlessly blends function and design by providing lighting within a bannister or railing bracket body.**

This development simplifies the installation of safety or railing illumination into one stylish bracket.

The brackets use low energy consumption LED bulbs with a life of approximately 12 years under continuous use. The light does not produce heat and is therefore safe to touch. Recommended bracket spacing is 900mm, as light coverage area at maximum height is 900mm. One transformer can power up to 16 brackets containing LEDs.

Requires the use of a Miles Nelson regulated power transformer, supplied separately. Complies with BIA acceptable solution D1/AS1. Can also be used with photosensitive sensors for night lighting.

Lumos Brackets are designed and manufactured in New Zealand.

DESIGNED BY  
MILES NELSON

- Lumos® bannister bracket
- 12 volt LED downlight
- Very low power consumption
- Cool running
- Adapter for flat profile rails
- Fixings supplied
- Base: 52mm x 50mm
- Wall projection: 70mm
- Upstand height: 80mm
- Overall height: 115mm

Indoor use	610SCBP	SC
Powder coated finish for outdoor use	610SCEBP	SC
Indoor use (without light)	611SCBP	SC
	611CP	CP
Powder coated finish for outdoor use (without light)	611SCBP	SC



## Lumos® Transformer

- 12 volt
- Each transformer can power 16 lights
- Tested to AS/NZS3108 at 25°C

612PA



# Bannister brackets

All products on this page feature a 5 year warranty

**5** YEAR WARRANTY

DESIGNED BY  
MILES NELSON



- Concealed fixing
- Fixings supplied
- Includes flat rail adapter
- Base: 55mm  
Wall projection: 78mm  
Upstand height: 60mm  
(75mm for 810SSWB1, removeable saddle)

810SCWB1	SC
810SNWB1	SN
810SSWB1 (cast 316 grade stainless steel)	SS
810SSGFK (glass fixing kit for 810SSWB1)	SS
810SGWB	NEW SG

DESIGNED BY  
MILES NELSON



- Concealed fixing
- Fixings supplied
- Includes flat rail adapter
- Supplied with hanger bolt
- Base: 30mm  
Wall projection: 70mm  
Upstand height: 60mm

810SC1	SC
810SN1	SN
810SG	NEW SG



- Concealed fixing
- Suits commercial applications
- Includes flat rail adapter
- Suitable for exterior use
- Base: 65mm  
Wall projection: 78mm  
Upstand height: 75mm
- 316 grade stainless steel

620SS	SS
-------	----



- Concealed fixing, fixings supplied
- Suits commercial applications
- Includes flat rail adapter
- Suitable for exterior use
- Base: 65mm  
Wall projection: 78mm  
Upstand height: 75.5mm
- 316 grade stainless steel

621SS	SS
-------	----



- Suitable for exterior use
- Fixings supplied
- Includes flat rail adapter
- Base: 60mm  
Wall projection: 75mm  
Upstand height: 70mm
- 304 grade stainless steel satin finish

309SS	SS
-------	----



- Fixings supplied
- Includes flat rail adapter
- Base: 50mm  
Wall projection: 85mm  
Upstand height: 55mm
- Galvanised steel inner base plate
- 304 grade stainless steel satin finish

405SS	SS
-------	----

# Bannister brackets

**5 YEAR WARRANTY**



- Made from cast aluminium
- Suitable for exterior use
- Fixings supplied
- Base: 55mm
- Wall projection: 75mm
- Upstand height: 45mm
- Powder coated

210SC

SC

**5 YEAR WARRANTY**



- Fixings supplied
- Base: 45mm x 50mm
- Wall projection: 60mm
- Upstand height: 75mm

110SC

SC

110CP

CP

110BR

BR

110FB

FB

**BRASS LIFETIME GUARANTEE**



- Concealed single point fixing
- Solid brass
- Suits square and round rails
- Fixings supplied includes hanger bolt
- Base diameter: 50mm
- Wall projection: 80mm
- Upstand height: 50mm

510SC

SC

510BR

PB

**BRASS LIFETIME GUARANTEE**



- Solid brass
- Suits square and round rails
- Fixings supplied
- Base diameter: 50mm
- Upstand height: 55mm

511SC

SC

511BR

PB

**BRASS LIFETIME GUARANTEE**



- Concealed fixing
- Solid brass
- Suits square and round rails
- Fixings supplied
- Base diameter: 57mm
- Wall projection: 75mm
- Upstand height: 60mm

512SC

SC

512SN

SN

**QUALITY STAINLESS STEEL**



- 304 solid Stainless Steel
- Concealed fixing
- Fixings supplied
- Flat handrail adaptor available
- Base diameter: 54.8mm
- Wall projection: 74mm
- Upstand height: 51mm

**Bannister Bracket**

813SS

**NEW**

SS

**Adaptor Plate**

813SSA

**NEW**

SS

# Window fittings

An extensive range of quality fittings available in a wide range of finishes designed to upgrade or replace hardware on a variety of window types.



# Window fittings



**B D** BRASS  
LIFETIME  
GUARANTEE

## Casement Stay – brass

- Solid brass
- For side hinged/casement windows
- Suitable for sealed windows
- 2 sizes available
- Fixings supplied

Size: 300mm	463SC300	SC
	463CP300	CP
	463BR300	PB
	463FB300	FB
	463PB300	MB
	463SG300	NEW SG
	463SN300	NEW SN
Size: 350mm	463SC350	SC
	463CP350	CP
	463BR350	PB
	463FB350	FB
	463SN350	SN



## Casement Stay – zinc

- Zinc alloy components with brass rod
- For side hinged/casement windows
- Suitable for sealed windows
- Fixings supplied

Size: 355mm	912SC355	SC
	912CP355	CP
	912BR355	BR
	912FB355	FB
	912PW355	PW

**10** YEAR  
WARRANTY



## Fanlight Stay – brass

- Solid brass
- For use on side-hinged/casement and top-hinged/awning windows
- Suitable for sealed windows
- Fixings supplied

**B D** BRASS  
LIFETIME  
GUARANTEE

Size: 250mm	465SC250SW	SC
	465CP250SW	CP
	465BR250SW	PB
	465FB250SW	FB
	465SN250SW	NEW SN
	465SG250SW	NEW SG
Size: 300mm	465SC	SC
	465CP	CP
	465BR	PB
	465FB	FB
	465SN	NEW SN
	465SG	NEW SG



## Fanlight Stay – zinc

- Zinc alloy components with brass rod
- For use on side-hinged/casement and top-hinged/awning windows
- Suitable for sealed windows
- Fixings supplied

Size: 305mm	913SC305	SC
	913CP305	CP
	913BR305	BR
	913FB305	FB

**10** YEAR  
WARRANTY



## Quadrant stay – brass

- Solid brass
- For use on side-hinged/casement windows
- Suitable for sealed windows
- Fixings supplied

Size: 37mm x 13mm	233SC	SC
	233CP	CP
	233BR	BR
	233FB	FB
	233SG	NEW SG

**B D** BRASS  
LIFETIME  
GUARANTEE

# Window fittings



## Telescopic Stay – brass

**B** BRASS  
LIFETIME  
GUARANTEE

DESIGNED BY  
MILES NELSON

- Solid brass
- For use on side-hinged/casement windows
- Suitable for sealed windows
- Fixings supplied

Size: 245mm, 378mm extended	246SC	SC
	246CP	CP
	246BR	PB
	246FB	FB
	246SN <b>NEW</b>	SN
	246SG <b>NEW</b>	SG



## Telescopic Stay – zinc

**10** YEAR  
WARRANTY

- Zinc alloy components with brass rod and body
- For use on side-hinged/casement windows
- Traditional thumb screw operation
- Suitable for retro fit
- Suitable for sealed windows
- Fixings supplied

Size: 200mm	917SC200	SC
	917CP200	CP
	917BR200	BR
	917FB200	FB
	917PW200	PW



## Restricted Telescopic Stay

**B** BRASS  
LIFETIME  
GUARANTEE

DESIGNED BY  
MILES NELSON

- Solid brass
- Suitable for sealed windows
- For use on side/casement windows
- Fixings supplied

Size: 140mm, 200mm extended	248SC	SC
	248CP	CP
	248BR	PB
	248FB	FB
	248PB	MB
	248SN <b>NEW</b>	SN
	248SG <b>NEW</b>	SG



## Windlock Stay

**B** BRASS  
LIFETIME  
GUARANTEE

DESIGNED BY  
MILES NELSON

- Solid brass
- Spring action fingerplate for multiple locating positions
- For use on side/casement windows
- Stainless fixings supplied
- Suitable for sealed windows

Size: 245mm, 378mm extended	264SC	SC
	264CP	CP
	264BR	PB
	264FB	FB
	264SN <b>NEW</b>	SN



# Wedge and Windlock Fasteners



## Wedge Fastener

- Zinc alloy
- For use on casement windows
- Suitable for sealed windows
- Fixings supplied

916SC	SC
916CP	CP
916BR	BR
916FB	FB
916PW	PW

5 YEAR WARRANTY



## Windlock Fastener

- Forged brass
- For use on awning and casement windows
- Suitable for sealed windows
- Fixings supplied

266SC	SC
266CP	CP
266BR	PB
266FB	FB
266SN	SN
266PB	MB
266SG	NEW SG

BRASS LIFETIME GUARANTEE

DESIGNED BY MILES NELSON



## Split Rail Fastener

- Zinc diecast
- Suitable for sealed windows
- Fixings supplied

914SCL	SC
914SCR	SC
914CPL	CP
914CPR	CP
914BRL	BR
914BRR	BR
914FBL	FB
914FBR	FB
914PWL	PW
914PWR	PW



## Split Rail Fastener

- Zinc diecast
- Suitable for sealed windows
- Fixings supplied

055SCL	SC
055SCR	SC
055CPL	CP
055CPR	CP
055BRL	BR
055BRR	BR
055FBL	FB
055FBR	FB
055SNL	SN
055SNR	SN
055PWL	PW
055PWR	PW



## Split Rail Fastener

- Solid brass
- Suitable for sealed windows
- Fixings supplied
- Use 237 packer under wedge for split rail window with no centre mullion

236SCL	SC
236SCR	SC
236CPL	CP
236CPR	CP
236BRL	BR
236BRR	BR
236SGL	NEW SG
236SGR	NEW SG

# Safety and security



# Safety and security

10 YEAR WARRANTY



DESIGNED BY  
MILES NELSON



## Window opening restrictor for aluminium windows

- Restricts window opening
- Three locating positions
- Unique glide design for ease of use
- Quality construction
- Window can be fully opened when disengaged if required
- Powder coat finish



## Window opening restrictor for timber windows

- Restricts window opening
- Three locating positions
- Unique glide design for ease of use
- Quality construction
- Window can be fully opened when disengaged if required
- Powder coat finish

## Window opening restrictor

- Suitable for aluminium windows
- Quality stainless steel construction
- Positive stop position
- Includes packers and screws

2 piece pack for 1 window 251REST2PK

4 piece pack for 2 windows 251REST4PK



SUITABLE FOR  
L & R HAND  
APPLICATION

1 piece pack	250SCA1	SC
	250PWA1	PW
	250PBA1	MB
2 piece pack	250PWA2	PW
	250PBA2	MB
4 piece pack	250SCA4	SC
	250PWA4	PW
	250PBA4	MB



SUITABLE FOR  
L & R HAND  
APPLICATION

1 piece pack	250PWT1	PW
	250SCT1	SC
2 piece pack	250PWT2	PW
4 piece pack	250PWT4	PW
	250SCT4	SC



SUITABLE FOR  
L & R HAND  
APPLICATION



## Patio bolt

- Secure locking function
- Concealed screws for extra security
- Quality construction
- Unique slimline design
- Suitable for new weather sealed joinery
- DIY friendly installation
- Recommended for interior use only

1 piece pack	281PW1	PW
	281SC1	SC
	281PB1	MB
2 piece pack (key alike)	281PW2	PW
	281SC2	SC
	281PB2	MB



## Mini bolt

- Secure locking function
- Concealed screws for extra security
- Quality construction
- Suitable for new weather sealed joinery
- DIY friendly installation
- Recommended for interior use only

1 piece pack	282PW1	PW
	282SC1	SC
	282PB1	MB
2 piece pack (key alike)	282PW2	PW
	282SC2	SC
	282PB2	MB

# Bathroom



# Casa Classica range

The timeless Casa Classica range features clean lines and detailing, designed to work well with a wide variety of décor and bathroom styles.

All products on this page feature a 5 year warranty.



## Towel ring

- Chrome on brass
- Concealed fixing
- Fixings supplied

593CP



## Robe hook

- Chrome on brass
- Concealed fixing
- Fixings supplied

594CP



## Towel rail

- Chrome on brass
- Concealed fixing
- Fixings supplied

Size: 600mm

595CP600



## Toilet roll holder

- Chrome on brass
- Concealed fixing
- Fixings supplied

596CP



## Toilet brush holder

- Chrome on brass
- Concealed fixing
- Fixings supplied

597CP



## Soap dispenser

- Chrome on brass
- Concealed fixings
- Fixing supplied

592CP



## Glass shelf

- Chrome on brass
- Concealed fixing
- Fixings supplied

599CP



# Quadrato range

The Quadrato range features bold square shapes with simple lines, designed to integrate well with the latest trends in bathroom decor.

All products on this page feature a 5 year warranty.



## Towel ring

- Chrome on brass
- Concealed fixing
- Fixings supplied

892CP



## Robe hook

- Chrome on brass
- Concealed fixing
- Fixings supplied

893CP



## Towel rail

- Chrome on brass
- Concealed fixing
- Fixings supplied

Size: 600mm

894CP600



## Toilet roll holder

- Chrome on brass
- Concealed fixing
- Fixings supplied

895CP



## Soap dispenser

- Chrome on brass
- Concealed fixings
- Fixing supplied
- Removable bottle for easy cleaning

891CP



## Soap holder

- Chrome on brass
- Concealed fixing
- Fixings supplied
- Removable dish for easy cleaning

890CP



# Rinnova range

The Rinnova range sets the benchmark for contemporary design in bathroom accessories. Featuring clean balanced forms, functional design and careful detailing. Rinnova is the perfect range to update an existing bathroom, or complement quality fittings in a new bathroom.

All products on this page feature a 5 year warranty.



## Towel ring

- Chrome on brass
- Concealed fixing
- Fixings supplied

793CP



## Robe hook

- Chrome on brass
- Concealed fixing
- Fixings supplied

794CP



## Towel rail

- Chrome on brass
- Concealed fixing
- Fixings supplied

Size: 600mm

795CP600



## Toilet roll holder

- Chrome on brass
- Concealed fixing
- Fixings supplied

796CP



## Toilet brush holder

- Chrome on brass
- Concealed fixings
- Fixing supplied

797CP



## Soap dispenser

- Chrome on brass
- Concealed fixing
- Fixings supplied

792CP





# Towel rail brackets

All products on this page feature a 5 year warranty.

**5** YEAR WARRANTY



## Towel rail end bracket

- Packed in pairs
- Fixings supplied

Suits 19mm tube	024SC19TBP	SC
	024CP19TBP	CP
	024PW19TBP	PW
	024PB19TBP	MB



## Towel rail centre bracket

- Packed in singles
- Fixings supplied

Suits 19mm tube	024SC19CBP	SC
	024CP19CBP	CP
	024PW19CBP	PW
	024PB19CBP	MB



## Towel rail end flange

- Packed in pairs
- Fixings supplied

Suits 19mm tube	107SC19BP	SC
	107CP19BP	CP
	107PW19BP	PW
	107PB19BP	MB
Suits 25mm tube	107CP25	CP



## Towel rail end bracket

- Packed in pairs
- Fixings supplied

Suits 16mm tube	028CP16T	CP
Suits 19mm tube	028CP19T	CP
Suits 25mm tube	028CP25T	CP



## Towel rail centre bracket

- Packed in singles
- Fixings supplied

Suits 16mm tube	028CP16C	CP
Suits 19mm tube	028CP19C	CP
Suits 25mm tube	028CP25C	CP



## Towel rail end flange round

- Open end
- Packed in pairs
- Fixings supplied

Suits 16mm tube	030CP16	CP
Suits 19mm tube	030CP19	CP
Suits 25mm tube	030CP25	CP



## Towel rail end flange oval

- Packed in pairs
- Fixings supplied

Suits 16mm tube	029CP16	CP
Suits 19mm tube	029CP19	CP

# Grab rails

All products on this page feature a 5 year warranty.



## 25mm diameter grab rail tube

- Residential use only
- Knurled grip area
- Concealed screw fixing
- Polished 304 grade stainless steel

Size: 300mm	530GR300SS	SS
Size: 400mm	530GR400SS	SS
Size: 600mm	530GR600SS	SS
Size: 900mm	530GR900SS	SS



## 25mm diameter angle grab rail tube

- Residential use only
- Knurled grip area
- Concealed screw fixing
- 45 degree curve
- Polished 304 grade stainless steel

Size: 150mm centre to end	535GRB150SS	SS
------------------------------	-------------	----



## 25mm diameter L shape tube

- Residential use only
- Knurled grip area
- Concealed screw fixing
- 90 degree bend
- Polished 304 grade stainless steel

Size: 400mm centre to end	535GRB400SS	SS
------------------------------	-------------	----



# Towel rail tubing

All products on this page feature a 5 year warranty.

**5** YEAR WARRANTY



## Towel rail tubing – aluminium

- Sizes: 600mm-2400mm
- Available in diameters: 16mm-25mm

### 19mm tubing

600mm	025CP19600	CP
900mm	025CP19900	CP
1200mm	025CP191200	CP
1800mm	025CP191800	CP
2400mm	025CP192400	CP
600mm	025PW19600	PW
900mm	025PW19900	PW
1200mm	025PW191200	PW
1800mm	025PW191800	PW
2400mm	025PW192400	PW
600mm	025SC19600	SC
	025PB19600	MB
900mm	025SC19900	SC
	025PB19900	MB
1200mm	025SC191200	SC
1800mm	025SC191800	SC
	025PB191800	MB
2400mm	025SC192400	SC



## Towel rail tubing – steel

- Sizes: 900mm-3600mm
- Diameters: 16mm-25mm

### 16mm tubing

900mm	026CP16900	CP
1200mm	026CP161200	CP
1800mm	026CP161800	CP
2700mm	026CP162700	CP
3000mm	026CP163000	CP

### 19mm tubing

900mm	026CP19900	CP
1200mm	026CP191200	CP
1800mm	026CP191800	CP
2400mm	026CP192400	CP
2700mm	026CP192700	CP

### 25mm tubing

900mm	026CP25900	CP
1200mm	026CP251200	CP
1800mm	026CP251800	CP
3600mm	026CP253600	CP



## Towel rail tubing – stainless steel

- Sizes: 2000mm-3000mm
- Diameters: 19mm-25mm

### 19mm tubing

2000mm	027SS192000	SS
3000mm	027SS193000	SS

### 25mm tubing

2000mm	027SS252000	SS
--------	-------------	----

# Economy range

All products on this page feature a 5 year warranty.



## Toilet roll holder

- Can be fixed left or right
- Bright anodised aluminium
- Adhesive fix

922CP

CP



## Toilet roll holder

- Can be fixed left or right
- Fixings supplied
- Chrome and satin chrome on steel, black nylon base

Rod: 6mm 919CP

CP

Rod: 10mm 923CP

CP

923SC

SC



## Toilet roll holder

- Brushed aluminium
- Suitable for commercial applications
- Can be fixed left or right
- Concealed fixing – single point hanger bolt
- Fixings supplied

Rod: 10mm 115SC

SC



## Toilet roll holder

- Can be fixed left or right
- Fixings supplied
- Left and right handed

112CP

CP

112SC

SC

112PW

PW



## Towel ring

- Fixings supplied

114CP

CP

114SC

SC

114PW

PW



## Tea towel rail – steel

- Rail diameter: 8mm
- Base diameter: 38mm

300mm 921CP300

CP

921PW300

PW

406mm 921CP406

CP

921PW406

PW

457mm 921CP457

CP

921PW457

PW

600mm 921CP600

CP

921PW600

PW

760mm 921CP760

CP

921PW760

PW



## Towel rail

- Rail diameter: 10mm
- Base diameter: 68mm

250mm 116CP250

CP

400mm 116CP400

CP

600mm 116CP600

CP

# Kick Plates, Numbers and Letters

Quality numbers and letters in a contemporary font to identify street and apartment numbers for use on letterboxes, fences and walls. Available in two sizes in either concealed or adhesive fix, in a brushed stainless steel or matt black finish.



# Kick Plates

All products on this page feature a 5 year warranty.



## Kickplate 200mm

- 304 Grade stainless steel
- 200mm high
- Suitable for commercial applications
- Pre-drilled and countersunk holes
- Stainless steel screws supplied

585mm	500KP610-200	SS
685mm	500KP710-200	SS
735mm	500KP760-200	SS
785mm	500KP810-200	SS
835mm	500KP860-200	SS
885mm	500KP910-200	SS



## Kickplate 300mm

- 304 Grade stainless steel
- 300mm high
- Suitable for commercial applications
- Pre-drilled and countersunk holes
- Stainless steel screws supplied

585mm	501KP610-300	SS
685mm	501KP710-300	SS
735mm	501KP760-300	SS
785mm	501KP810-300	SS
835mm	501KP860-300	SS
885mm	501KP910-300	SS



## Push plate 300mm

- Blank (not engraved) push plate
- Suitable for commercial applications
- 300mm high
- Brushed 304 Grade stainless steel
- Fixings supplied

300mm	502PP300-100	SS
-------	--------------	----

## Engraved push plate 300mm

- Engraved Push plate
- Suitable for commercial applications
- 300mm high
- Brushed 304 Grade stainless steel
- Fixings supplied

300mm	502PPENGR	SS
-------	-----------	----

## Engraved pull plate with handle 300mm

- Engraved Pull plate
- Suitable for commercial applications
- 300mm high
- Brushed 304 Grade stainless steel
- Fixings supplied

300mm	502PPENGRH	SS
-------	------------	----

## Round sign

- 'Push' sign for restroom doors
- Round 75mm diameter
- Suitable for commercial applications
- Brushed 304 Grade stainless steel
- Fixings supplied

Baby Change	503PPTBC	SS
Wheelchair Accessible	503PPTDIS	SS
Men	503PPTM	SS
Men/Women	503PPTM/W	SS
Women	503PPTW	SS
Pull	503PULPR	SS
Push	503PUSPR	SS

# Numbers and letters



## Numbers 0-9 – concealed fix

**5** YEAR WARRANTY

### 100mm

0	721SS1000	SS
	721PB1000	MB
1	721SS1001	SS
	721PB1001	MB
2	721SS1002	SS
	721PB1002	MB
3	721SS1003	SS
	721PB1003	MB
4	721SS1004	SS
	721PB1004	MB
5	721SS1005	SS
	721PB1005	MB
6	721SS1006	SS
	721PB1006	MB
7	721SS1007	SS
	721PB1007	MB
8	721SS1008	SS
	721PB1008	MB
9	721SS1009	SS
	721PB1009	MB

### 155mm

0	721SS1550	SS
	721PB1550	MB
1	721SS1551	SS
	721PB1551	MB
2	721SS1552	SS
	721PB1552	MB
3	721SS1553	SS
	721PB1553	MB
4	721SS1554	SS
	721PB1554	MB
5	721SS1555	SS
	721PB1555	MB
6	721SS1556	SS
	721PB1556	MB
7	721SS1557	SS
	721PB1557	MB
8	721SS1558	SS
	721PB1558	MB
9	721SS1559	SS
	721PB1559	MB



# Numbers and letters



## Numbers 0-9 – adhesive fix

100mm, 2mm thick

0	521SS1000	SS
1	521SS1001	SS
2	521SS1002	SS
3	521SS1003	SS
4	521SS1004	SS
5	521SS1005	SS
6	521SS1006	SS
7	521SS1007	SS
8	521SS1008	SS
9	521SS1009	SS

155mm, 2mm thick

0	521SS1550	SS
1	521SS1551	SS
2	521SS1552	SS
3	521SS1553	SS
4	521SS1554	SS
5	521SS1555	SS
6	521SS1556	SS
7	521SS1557	SS
8	521SS1558	SS
9	521SS1559	SS



## Letters A-E – concealed fix

100mm, 2mm thick

A	722SS100A	SS
	722PB100A	MB
B	722SS100B	SS
	722PB100B	MB
C	722SS100C	SS
	722PB100C	MB
D	722SS100D	SS
	722PB100D	MB
E	722SS100E	SS
	722PB100E	MB

## Letters A-E – adhesive fix

100mm, 2mm thick

A	522SS100A	SS
B	522SS100B	SS
C	522SS100C	SS
D	522SS100D	SS
E	522SS100E	SS



# Warranty information

## 5 YEAR MILES NELSON WARRANTY

---

**Products covered:** All General Hardware Products not included under the 10 year warranty. Including: Bannister Brackets, Bathroom Fittings, Cabinet Hardware & Handles, Cabin Hooks, Door Fittings, Door Stops, Hinges, Hooks, Kickplates, Push Plates, Grab Rails, Letterbox Letters & Numbers, Neck Bolts, Security Fittings (excluding the Patio Bolts, Mini Bolts, Restrictor Stays and Security Window Stays), Socket Bolts and Window Fittings.

This product is warranted to be free from mechanical and workmanship defects for 5 years from the original date of purchase.

If a mechanical defect occurs simply return the product together with proof of purchase to point of purchase for replacement.

Over time the surface may deteriorate if exposed to adverse atmospheric conditions caused by sea, air and weather. Finish deterioration caused by exposure to adverse atmospheric conditions or occurring from the use of paints, solvents, acid cleaners or scratching from keys is not considered a defect in the finish and is not covered by the warranty conditions.

Likewise the warranty does not cover damage caused by incorrect installation, accident, neglect or other factors over which Miles Nelson have no control and as such Miles Nelson shall not be held liable for any losses or expenses such as loss of use, damage to property or consequential damages or expenses.

Products are designed for residential use only unless otherwise stated. If products are used for commercial purposes the consumer guarantees act does not apply.

## 10 YEAR MILES NELSON WARRANTY

---

**Products covered:** Door Handles & Pulls, Restrictor Stays, Security Window Stays, Patio Bolts and Mini Bolts.

This product is warranted to be free from workmanship defects for 10 years from the original date of purchase.

If a defect is detected simply return the product together with proof of purchase to the supplier for replacement.

Products are designed for interior residential applications, unless otherwise stated.

Over time the surface may deteriorate if exposed to adverse atmospheric conditions caused by sea, air and weather. Finish deterioration caused by exposure to adverse atmospheric conditions or occurring from the use of ammoniated detergents, metal polishes, solvents, corrosive environments or other abrasive agents or scratching from keys is not considered a defect in the finish and as such is not covered by the warranty.

Likewise, the warranty does not cover damage caused by incorrect installation, accident, neglect or other factors over which Miles Nelson have no control and as such Miles Nelson shall not be held liable for any losses or expenses such as loss of use, damage to property or consequential damages or expenses.

Products are designed for residential use only unless otherwise stated. If products are used for commercial purposes the consumer guarantees act does not apply.

---

PRINTED APRIL 2019.

Disclaimer: Due to continuous product development, some products may vary from those shown. The Miles Nelson guarantee/warranty, shown on the pages within, applies only when properly installed and subjected to no more than fair wear and tear. This guarantee and warranty do not extend to labour costs, personal loss, death or injury or economic, consequential or property damage of any kind whatsoever. Due to the nature of the printing process, colours may vary from those shown in this brochure. All dimensions are nominal and product should be checked prior to installation. To view our full range of products or for more information please visit [milesnelson.co.nz](http://milesnelson.co.nz) or phone 0800 6635 766 or email [info@milesnelson.co.nz](mailto:info@milesnelson.co.nz)

**Notes:**

## Notes:

# Miles Nelson®

Architectural  
Hardware est. 1928



**P: 0800 663 5766**  
**F: +64 9 489 5552**  
**E: [info@milesnelson.co.nz](mailto:info@milesnelson.co.nz)**  
PO Box: 31 043 | Milford, Auckland

---

To view the full range of products visit:  
**[milesnelson.co.nz](https://milesnelson.co.nz)**